



Warlingham School Sixth Form

A Business & Enterprise Specialist School

Course
Guide

Past Students Successes



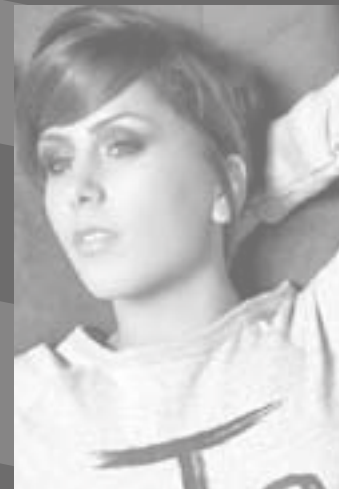
Simon Pizzey graduated with a First Class degree 'BSc in Psychology and Health' and is in the process of completing a Masters degree in research (MRes) Applied Health at De Montfort University. Simon has also successfully gained a four year contract on the NHS Graduate Management Scheme with the promise of great opportunities at the end of the contract.



Dean Curt left Warlingham School as Head Boy to follow his dream of a career in the Royal Air Force. Whilst at school, he joined the Air Training Corps and worked his way up through the ranks. Later he went to Nottingham University to study Politics before joining the RAF to become a Flying Officer. He passed out from RAF Cranwell a couple of years ago and will hopefully be receiving his 'Wings' shortly. Currently, he is flying a Griffin helicopter and eventually hopes to be flying a Chinook.



Jamie Wilkes set up a theatre company called, 'Belt Up' whose production of 'The Tartuffe' and an adaptation of Kafka's 'The Trial' were played at the Southwark Playhouse in 2009 and has been rehearsing to play Salvador Dali in a play about the surrealists.



Katy Shotter After leaving Warlingham School and Sixth Form, Katy's first big break came when she was in the final of the reality show, Chancers. Katy won the show and was signed to Sony BMG and was managed by Mathew Knowles, Beyonce's father and manager. Over the next few years, Katy toured with Beyonce in Spain, the UK, America and Canada and was invited to support her during her special New Year show in Las Vegas. Katy recently performed in Cannes and St Tropez as one of the artists representing the British Music Industry overseas and has been concentrating on recording her first album which is due to hit the shelves soon.



Warlingham School Sixth Form

A Business & Enterprise Specialist School

Sixth Form Courses

AS and A2 Levels

Art & Art Textiles	p4
Biology	p4
Chemistry	p5
Design & Technology Product Design	p5
Drama	p6
Economics and Business	p7
English Literature	p7
Film Studies	p8
French	p9
Geography	p9
German	p10
Government & Politics	p11
History	p11
Applied ICT	p12
Law	p12

Mathematics	p13
Further Mathematics	p13
Media Studies	p14
Music	p14
Music Technology	p15
Physical Education	p15
Physics	p16
Psychology	p17
Sociology	p18
Spanish	p18

Applied GCE

Business (Single & Double Awards)	p19
Health and Social Care (Single & Double Awards)	p19

BTEC National Diploma

Business (Retail – single A Level)	p20
Sport (Single or Double A Level)	p20

BTEC First Diploma

Business (1 year)	p21
Sport (1 year)	p21

GCSE

English Language (1 year)	p22
Mathematics (1 year)	p22

Enrichment

Critical Thinking	p23
Extended Project	p23
Enrichment List	p23

AS and A2 Levels

AS and A2 Level Art (Unendorsed) and Art Textiles

Duration: 1–2 years **Board:** AQA

Course Entry Qualifications: A GCSE grade A or B in Art or Textiles as appropriate.

Art (Unendorsed)

This course enables students to explore a wide range of approaches to their studies. The disciplines offered by the Art department are painting and drawing, printmaking, mixed media, three dimensional design and some textiles. Students will be encouraged to use a variety of media and materials to develop their creative skills and express their individual thoughts, feelings, observations and ideas in visual form. Drawing is an essential part of the course and as well as opportunities to draw from direct observation they will take part in a life drawing workshop. Students will study the work of other artists to develop an understanding of continuity and change across different genres, styles and traditions and then apply this knowledge to their own work.

Textiles

This course will enable students to focus on textile disciplines within an Art and Design context. It involves the creation, selection and manipulation of textiles, across a variety of practices such as constructed, dyed and printed textiles. Students will develop their knowledge and understanding of techniques including weaving, embroidery, appliqué, batik, silk painting, tie and dye, hand painting and lino printing. A wide range of natural and manufactured materials will be explored to address aspects of design in fashion, furnishing and fine art.

AS Assessment Format

One unit of coursework – 30%

Externally set assignment (5hrs) – 20%

A2 Assessment Format

One unit of coursework – 30%

Externally set assignment (15hrs) – 20%

To gain a full A level in Art, students will need to complete the AS level at the end of which they will have achieved 50% of their overall mark.

Possible Careers and Higher Education

Foundation Course in Art and Design. Degree courses in Fine Art, Print Making, Sculpture, Theatre Design, Fashion, Textiles, Interior Design, Graphic Design and Illustration, Animation, Film and Video Making, Advertising, Packaging and Typography.

*Further information from: Miss A Starkey
(Head of Art)*

A Level Biology

Duration: 2 years **Board:** AQA

Course Entry Qualifications: GCSE Double Science grade BB or above. GCSE Biology grade B or above.

AS Course Description

Unit 1: Biology and Disease – focuses on the physiology of the digestive and gas exchange systems of humans. The unit also examines how the normal function of these systems may be affected by communicable and non-communicable diseases.

Unit 2: The Variety of Living Organisms – this unit will cover how genetic and environmental factors affect the variation that is evident between organisms.

Unit 3: Practical and Investigative Skills – this unit concentrates on investigative and practical skills. Practical skills will be assessed continually throughout the year.

Each student will also complete a written practical exam.

A2 Course Description

Unit 4: Populations and Environment – looks at how living organisms interact to form ecosystems through which energy is transferred and chemical elements are cycled. The impact of human activity on the ecological balance is explored. It is expected that students will also carry out fieldwork to supplement their learning.

Unit 5: Control in Cells and in Organisms – how the body responds to changes in its internal and external environment forms the main component of this unit. The nervous and endocrine systems are explored as are other homeostatic processes.

Unit 6: Practical and Investigative Skills – this unit concentrates on investigative and practical skills. Practical skills will be assessed continually throughout the year.

Each student will also complete a written practical exam.



“I have been at the Sixth Form since September 2009 and it’s been amazing here. All the students and staff are really supportive.”

Devanshi Mehta

Ex-Archbishop Lanfranc School
Business and English

Assessment Format

Unit 1: Written paper – 33% of AS mark, 16% of total A Level mark

Unit 2: Written paper – 46% of AS mark, 23% of total A Level mark

Unit 3: Practical skills and written paper – 20% of AS mark, 10% of total A Level mark

Unit 4: Written paper – 16% of total A Level mark

Unit 5: Written paper – 16% of total A Level mark

Unit 6: Practical skills and written paper – 10% of total A Level mark

Possible Careers and Higher Education

Degrees in Biology, Biomedical Sciences, Dentistry, Ecology, Medicine, Physiotherapy, Pharmacology, Sports Science, Zoology.

Careers in Animal Welfare, Clinical Diagnostics, Drug Research and Development, Environmental Consultancy, Marine Fisheries, Pathology.

Further information from: Mr P Seward

A Level Chemistry

Duration: 2 years **Board:** OCR

Course Entry Qualifications: GCSE grade B or above in Double Science or Chemistry.

Course Description

The specification is divided into chemical topics, each containing different key concepts of Chemistry. Once the key features of a chemical topic have been developed, applications are considered. For assessment purposes, knowledge and understanding of key concepts are treated separately at AS; important links between different areas of Chemistry are largely assessed synoptically at A2. While the teaching of practical skills may be integrated with the theoretical topics, they are assessed separately. This allows skills to be developed in a way suited to each individual centre.

AS

Unit 1: Atoms, Bonds and Groups

Unit 2: Chains, Energy and Resources

Unit 3: Practical Skills in Chemistry 1

A2

Unit 4: Rings, Polymers and Analysis

Unit 5: Equilibria, Energetics and Elements

Unit 6: Practical Skills in Chemistry 2

AS Assessment Format

Unit 1: Written paper 60 marks (1hr) – 30%

Unit 2: Written paper 100 marks (1hr 45mins) – 50%

Unit 3: Coursework 40 marks – 20%

A2 Assessment Format

Unit 4: Written paper 60 marks (1hr) – 15%

Unit 5: Written paper 100 marks (1hr 45mins) – 25%

Unit 6: Coursework 40 marks 10%

Possible Careers and Higher Education

Degrees in Chemistry, Dentistry, Medicine and Agriculture. Careers in Chemical Engineering, Food Industry, Ecology, and Forensic Science.

Further information from: Mr P Seward and Mr G Knott

AS and A2 Level Design & Technology

The course is all about innovative designing – how to develop ideas and realise them. Students will be able to take their design aspirations into both 2D and 3D form choosing from a variety of areas – Resistant Materials, Engineering, Manufacturing, Graphics, Built Environment and Textiles. Students will extend and build on their knowledge of materials and processes, design in society, sustainable design, modelling and innovation and designing and presentation skills.

AS Course Description

Students will undertake short inputs and focussed skills tasks in:

- Sustainable design – understanding the impact of products on the environment and the wider community
- Development modelling – working with 2D and 3D modelling materials
- Presentation techniques – development of drawing skills
- Use of digital media – use of CAD, CAM, digital photos, video etc. to produce design portfolios
- Materials – practical skill exercises and theoretical tasks to develop knowledge of materials and processes.

The latter half of the year will be concentrated on 'the product study' assessed coursework and in preparation for the "Advanced Innovation Challenge". This is a practical, designing and making exam-based around a theme set by the exam board.

A2 Course Description

The second year will continue the development of the skills nurtured in the first year but further detail will be carried out in the material studies. Students will necessarily devote much of the year to the assessed coursework "Design, Make, Evaluate". The theme for this will be chosen by the students with guidance from staff.

AS and A2 Levels

AS Assessment Format

- Product Study – 60%
- Advanced Innovation Challenge – 40%

A2 Assessment Format

- Design, Make, Evaluate – 60%
- Product Design Written Exam – 40%

Possible Careers and Higher Education

Degrees in Design Technology, Design Studies, Product Design, Engineering, Graphic Design, Packaging Design, Environmental Design, Interior Design and Food Technology. Careers in Product Design, Advertising, Graphical Design, Packaging Design, Engineering, Environmental Design and Interior Design, Architecture, Construction Industry and Food Technology.

Further information from: Mr S Fernihough



AS and A2 Level Drama

Duration: 1 or 2 years **Board:** Edexcel

Course Entry Qualification: GCSE grade B or above in Drama and C or above in English. Students without Drama GCSE will need to prove an active interest in Performing Arts.

AS Course Description

This course involves the study of various dramatic styles, acting techniques, stage formats and theatre practitioners. Through study and performance of contrasting play texts you will extend and develop your understanding of modern theatre practice, and the context in which the plays were originally written. This will include practical exploration of the play texts, an understanding of how plays are interpreted and response to the experience of live theatre performances. In the spring term you will apply the understanding acquired in Unit 1 in a performance context. You will be involved in a full scale teacher directed production which you will contribute to either as an actor or designer. This second unit allows you to contribute towards a group performance, experience a directed rehearsal process and experience performance to an audience. As well as involvement in the full-scale production, students are also required to perform either a monologue or duologue as part of the assessment.

A2 Course Description

This year encourages students to think about theatre from a more directorial point of view. The first unit this year requires the creation of a unique and original piece

of theatre. You will be assessed on both the process of creating the piece and the finished product in the form of a performance to an audience. This unit allows you to research, develop and structure performance materials, make decisions about style genre and techniques, demonstrate performance and/or design skills and experience performance to an audience. Unit 4 is an externally assessed written unit requiring the detailed study of one set play text and one prescribed historical period of theatrical development. This unit takes the form of a 2hr 30min written exam. This unit is designed to develop your understanding of how play texts may be re-interpreted for a contemporary audience, appreciate the staging potential of play scripts and understand the social and historical context of theatre.

AS Assessment Format

Unit 1: Exploration of Drama and Theatre – 40% (teacher assessed practical and written)

Unit 2: Theatre Text in Performance – 60% (externally examined practical and written)

A2 Assessment Format

Unit 3: Exploration of Dramatic Performance – 40% (teacher assessed practical and written)

Unit 4: Theatre Text in Context – 60% (externally examined practical and written)

Possible Careers and Higher Education

Higher education at university or college, Drama school, teacher training. Careers in theatre as performers, designers, administrators, managers, educational theatre, drama therapy, social work, teaching, work in local regional or national arts provision, arts administration, film television and radio.

Further information from: Ms N Clark or Mr A Deacon

"I chose Warlingham because it offered the Surrey Graduation Scheme which was not on offer at the other Sixth Forms that I visited. I hope to go on to study Medicine in the future and I have found that tutor periods in which targets are set have really helped me to improve my learning techniques which will help me in the future."

Muhammad Safdar

Ex-Oasis Academy
Biology/Physics/Maths/Chemistry/General Studies

AS and A2 Level Economics & Business

Duration: 1–2 years **Board:** Edexcel

Course Entry Qualifications: GCSE grade B or above in English and Maths.

Course Description

The course offers a progressive and integrated framework for students to investigate how and why businesses operate within an economy. Students develop an understanding of relevant economic and business concepts, and an ability to apply them to real world issues. There is emphasis on the nature and processes of decision making within organisations. Business behaviour is studied from the perspectives of all stakeholders, including shareholders, managers, customers and the local community.

AS

Students study developing new business ideas, this involves investigating how new or existing businesses generate their product or service ideas. Students would also consider the competition in the market, the economic climate, also how businesses might be financed and managed.

A2

In the second year students will continue studying the competitive market. They will also be introduced to the world of international business and the issues which a company trading internationally has to face.

AS Assessment Format

- Two written exams – 50%

A2 Assessment Format

- Two written exams – 50%

Possible Careers and Higher Education

Degrees in Business, Economics, Finance and Management. Careers in Business, Marketing, Banking.

Further information from: Mr S Grimes

AS and A2 Level English Literature

Duration: 1–2 years **Board:** AQA Specification B

Course Entry Qualifications: GCSE grade B or above in English Language and Literature.

Course Description

Both courses involve an examination of a wide range of literary texts from all periods as well as works of non-fiction. Candidates will be required to:

- Communicate clearly and accurately their knowledge, understanding of and their insight to the literary texts studied, both in writing and in discussion
- Respond with knowledge and understanding to literary texts of different types and periods, showing how writers' choices of form, structure and language shape meanings
- Articulate informed, independent opinions and judgements of literary texts and other readers' opinions of them
- Demonstrate how historical, cultural and social factors influence literary works through knowledge gained by a wider reading programme

You will need to:

- Produce evidence of your set reading during the summer before the course begins
- Read from a set list novels and non-fiction
- Participate in supporting residential and theatre visits

AS Assessment Format

Unit 1: Aspects of Narrative (2hrs) – 30%

Minimum of two novels (at least one will be post 1990) and two poetry texts (1800-1945). One section of the exam will test understanding of one text in detail, while the other will test an aspect of the remaining three.

Unit 2: Dramatic Genres (Tragedy) Coursework – 20%

Two drama texts (at least one will be by Shakespeare). Two pieces of coursework of 1200-1500 words.

A2 Assessment Format

Unit 3: Texts and Genres (Elements of the Gothic or Elements of the Pastoral) (2hrs) – 30%

Texts in Context

Minimum of three texts for study (at least one will have been written 1300-1800). One section of the exam will test understanding of one text in detail, while the other will test a comparative aspect of at least three.

Unit 4: Further and Independent Reading. Coursework – 20%

Minimum of three texts for study including one pre-released anthology of critical material, two pieces of written coursework; one a comparative study of an aspect of two texts (1500-2000 words), the other an application of pre-released critical anthology to a literary text (1200-1500 words).

Possible Careers and Higher Education

Degrees in English, Law, Business Administration and others. Careers in the Media, Personnel Work, Journalism, Publishing, Teaching and Business.

Further information from: Mrs R Holder

AS and A2 Levels

AS and A2 Level Film Studies

Duration: 1–2 years **Board:** WJEC

Course Entry Qualifications: Three GCSEs including English

Course Description

This specification is divided into a total of four units, two AS units and two A2 units. The AS/A specification in Film Studies is designed to deepen students' understanding, appreciation and enjoyment of film, the major art form of the twentieth century, and one developing new modes of expression and exhibition in the first decades of the twenty-first century.

The specification builds on the cine-literacy learners have developed informally since childhood. They will study film deriving from a variety of production contexts and experienced in a variety of viewing situations. They will also engage with a wide range of different kinds of films, developing skills of observation, critical analysis and personal reflection,

as well as developing their creativity and practical skills, either in audio-visual or written form. A variety of forms of assessment are used, with the intention of producing imaginative, active learners.

In particular, the specification explores the relationship between the film and the individual by exploring how films create meanings and produce both intellectual and emotional responses. Additionally, the aesthetic and sensory qualities of film are emphasised as integral to a study of the interaction between films and spectators. Analysis is enabled by the application of critical approaches appropriate to this level, as well as through creative project work. The study of film producers and audiences explores issues of production and consumption: the supply of and demand for films. Some of the recurring debates within film culture will be explored. These include the global dominance of Hollywood, strategies for supporting indigenous film and the significance of fandom.

The specification introduces students to the diverse range of film forms and film styles developed in different places throughout the history of cinema. In giving students the opportunity to study significant film movements and aspects of national cinemas, it is intended that an interest in film culture will be fostered which can be taken forward in lifelong learning. As the only dedicated Level 3 specification in Film Studies, this contributes to the quality and coherence of provision nationally. With its emphases on visual storytelling and aesthetics, it extends areas of experience covered by literature and art history specifications. With its emphasis on contexts of production and reception, and on cultural politics, it has close affinities with courses in Media and Cultural Studies. With its options in creative work, it opens up the study of film aesthetics and film form, as well as broader political and ethical issues through experiential learning.

AS Assessment Format

Unit 1: Exploring Film Form

FM1 – 20% (40%) Internal Assessment: One analysis of how the micro aspects of a chosen extract from a film of candidate's choice produce meanings and responses (1500 words): 30. One creative project based on a film sequence or short film: 50: (sequence or short film – 40 / reflective analysis – 10).

Paper raw mark total: 80. Paper UMS total: 80

Unit 2: British and American Film

FM2 30% (60%) External Assessment (2hrs 30mins)

Written Paper, three questions, one from each section:

Section A: Response to stimulus material set by Awarding Body based on producers and audiences of film (40)

Section B: Topics in British Film (40)

Section C: US Film – Comparative study of two films (40)

Paper raw mark total: 120. Paper UMS total: 120

A2 Assessment Format

Unit 3: Film Research and Creative Projects

FM3 25 % Internal Assessment: a small scale research project (40) creative project (60 – 45 product/15 reflective analysis)

Paper raw mark total: 100. Paper UMS total: 100

Unit 4: Varieties of Film Experience: Issues and Debates

FM4 25% External Assessment (2hrs 45mins)

Written Paper, three questions, one from each section:

Section A: World Cinema topics (35)

Section B: Spectatorship topics (35)


Section C: Single Film – Critical Study (30)

Paper raw mark total: 100. Paper UMS total: 100

Possible Careers and Higher Education

Media and Film Studies degrees, Cultural Studies, Film and TV studies, Broadcasting etc. Career opportunities in film and TV but the course also has transferable skills such as analysis, business, marketing etc. and could be suited to a range of jobs beyond visual arts.

Further information from: Mr D Powell



"I am hoping to have a career in photography when I leave Warlingham."

Georgia Nelson

Ex-Warlingham
Business/Maths/English/Food Tech.

French A Level

Duration: 2 years **Board:** AQA

Course Entry Qualifications: GCSE grade B or above in French

Course Description

During this course you will read and listen to authentic foreign language materials and will study aspects of the contemporary society, cultural background and heritage of a country where the language is spoken. You will have the opportunities to develop your understanding and awareness of spiritual, moral, ethical, environmental, health and European issues. You will extend and develop your knowledge of the grammar and vocabulary of the foreign language and will use this to speak, write, read and listen to the language.

In addition, you will learn how to:

- be an effective communicator
- speak and write the language in a range of different situations and for different purposes
- use the language to express facts and ideas
- use the language to present explanations, opinions and information

The students study the following topics:

AS

Media: television, advertising, communication technology

Popular culture: cinema, music, fashion trends

Healthy living/lifestyle: sport/exercise, health and well-being: alcohol, diet, holidays, etc.

Family/Relationships: parents, friendships, marriage/partnerships

A2

Environment: pollution, energy, protecting the planet

Multi-cultural society: immigration, integration, racism

Contemporary social issues: wealth and poverty, law and order, impact of scientific and technological progress

Students will also choose a cultural topic, from the target language country, to study in depth:

- A region
- A period of 20th century history
- A novel
- A dramatist or poet
- The work of a director/architect/musician/painter

AS Assessment Format

Unit 1: Listening/reading/writing (2hrs) – 35%

Unit 2: Oral (15mins) – 15%
Discussion on three chosen topics

A2 Assessment Format

Unit 3: Listening / reading / writing (2hrs 30mins) – 35%

Unit 4: Oral (15mins) – 15%
Presentation of a point of view and a conversation on two chosen cultural topics

Possible Careers and Higher Education

Degrees in French, Business Studies with French, European Studies, Sciences with French, Law with French. Careers in translating, travel industry, interpreting, au pair work, bi-lingual secretarial work. Languages are viewed as a desirable qualification by many employers, showing good communication skills.

Further information from: Miss T Rhoda

AS and A2 Level Geography

Duration: 2 years **Board:** Edexcel

Course Entry Qualifications: GCSE grade B or above in Humanities or C in Geography.

Course Description

These Geography AS/A2 levels are based on the two principles of the people – environment approach to Geography and the enquiry approach to learning. People – environment Geography is based on the examination of questions, issues and problems that arise from the interaction of people with their varied environments. The enquiry approach to learning is based on the understanding that the most effective forms of learning are invoked when students are actively engaged in enquiry into questions, issues and problems. Students are also expected to take part in Geography fieldwork to Swanage and Naples in alternate years.

AS

Unit 1: Global Challenges – two compulsory topics

- World at Risk
- Going Global

Unit 2: Geographical Investigation – two topics out of four

- Extreme Weather or Crowded Coasts
- Unequal Spaces or Rebranding Places

A2

Unit 3: Contested Planet – six compulsory topics

- Energy Security
- Water Conflicts
- Biodiversity Under Threat
- Superpower Geographies
- Bridging the Development Gap
- The Technological Fix

Unit 4: Geographical Research – choose one topic from six

- Tectonic Activity and Hazards
- Cold Climates
- Life on the Margins: the Food Supply Problem
- The World of Cultural Diversity
- Pollution and Human Health at Risk
- Consuming the Rural Landscape

AS and A2 Levels

AS Assessment Format

Unit 1: Global Challenges, one exam (1hr 30mins) – 60% of AS marks (June exam only)

Unit 2: Geographical Investigation, one exam (1hr) – 40% of AS marks (June or January exam)

A2 Assessment Format

Unit 3: Contested Planet, one exam (2hrs 30mins) – 60% of A2 marks (June exam only)

Unit 4: Geographical Research, one exam (1hr 30mins) – 40% of A2 marks (June or January exam)

Possible Careers and Higher Education

Degrees in Geography, Rural Studies, Environmental Studies. Careers in town planning, water companies, agriculture, environmental management, overseas development, teaching.

Further information from: Mrs S Green



German A Level

Duration: 2 years **Board:** AQA

Course Entry Qualifications: GCSE grade B or above in German

Course Description

During this course you will read and listen to authentic foreign language materials and will study aspects of the contemporary society, cultural background and heritage of a country where the language is spoken. You will have the opportunities to develop your understanding and awareness of spiritual, moral, ethical, environmental, health and European issues. You will extend and develop your knowledge of the grammar and vocabulary of the foreign language and will use this to speak, write, read and listen to the language.

In addition, you will learn how to:

- be an effective communicator
- speak and write the language in a range of different situations and for different purposes
- use the language to express facts and ideas
- use the language to present explanations, opinions and information

The students study the following topics:

AS

Media: television, advertising, communication technology

Popular culture: cinema, music, fashion trends

Healthy living/lifestyle: sport/exercise, health and well-being: alcohol, diet, holidays, etc.

Family/Relationships: parents, friendships, marriage/partnerships

"I chose Waringham Sixth Form as they have good facilities and a friendly atmosphere. Since I have been here I have improved my English language and made lots of friends."

Tracy Mamu

Ex-Edenham High School
Business / Maths / English

A2

Environment: pollution, energy, protecting the planet

Multi-cultural society: immigration, integration, racism

Contemporary social issues: wealth and poverty, law and order, impact of scientific and technological progress

Students will also choose a cultural topic, from the target language country, to study in depth:

- A region
- A period of 20th century history
- A novel
- A dramatist or poet
- The work of a director/architect/musician/painter

AS Assessment Format

Unit 1: Listening/reading/writing (2hrs) – 35%

Unit 2: Oral (15mins) – 15%
Discussion on three chosen topics

A2 Assessment Format

Unit 3: Listening / reading / writing (2hrs 30mins) – 35%

Unit 4: Oral (15mins) – 15%
Presentation of a point of view and a conversation on two chosen cultural topics

Possible Careers and Higher Education

Degrees in German, Business Studies with German, European Studies, Sciences with German, Law with German. Careers in translating, travel industry, interpreting, au pair work, bi-lingual secretarial work. Languages are viewed as a desirable qualification by many employers, showing good communication skills.

Further information from: Miss T Rhoda

AS and A2 Level Government and Politics

Duration: 1–2 years **Board:** Edexcel

Course Entry Qualifications: Grade C in a GCSE Humanities Course (History, Sociology, Geography or Government & Politics). Grade C at GCSE English

Course Aims

- To develop awareness of what politics is and how it works in the UK. We also examine the relationship between political ideas and political practices.
- To understand where power lies and how it is used in the UK.
- To gain knowledge of the rights and responsibilities of individuals and to highlight the importance of participation in a democracy such as ours.

AS Key Areas of Study

Two units cover some of the following issues: is there a political participation crisis in the UK? Is our electoral system fit for purpose? What kind of democracy do we live in? How can we improve our democracy? Are pressure groups more important than political parties? Is there such a thing as a UK constitution? Where does power lie within our Political system?

A2 Key Areas of Study

Two units extend our understanding of political ideas and how they apply in practice. Issues for investigation include: What is liberalism? Is the Conservative party still Margaret Thatcher's party? Has the Labour Party abandoned socialism and the working class? Is feminism relevant? Is an ecological disaster inevitable?

AS 50% Assessment Format

Unit 1: Written (1hr 20mins)

Unit 2: Written (1hr 20mins)

A2 50% Assessment Format

Unit 3: Written (1hr 30mins)

Unit 4: Written (1hr 30mins)

Possible Careers and Higher Education

Careers: Journalism, Civil Service, Law, Local Government, Social Policy, Management Consultancy, Social Work, Teaching and Others. Courses at University: Political Studies, Philosophy, Business and Economics, Law, Sociology, Social Policy Making, Comparative Studies, International Relations, History and many more.

Further information from: Mr G Johnston

AS and A2 Level History

Duration: AS 1 year – A2 2 years **Board:** AEB

Course Entry Qualifications: Humanities GCSE B, History GCSE B. If neither of these subjects are taken: English B (C passes will be considered).

AS Course Description

This course consists of two modules. The first is an outline study of Russia and Germany 1871-1914. This unit provides an overview of the development of Imperial Germany and Tsarist Russia and the relationships between them.

There are three key areas of study:

Germany 1871-1914: Political structure, domestic policies under Bismarck and Kaiser Wilhelm II, growing militarism and economic and social change.

Russia 1871-1914: Political structure, domestic politics under Tsar Alexander III and Nicholas II and the political impact of economic and social change.

The Causes of WW1: German and Russian foreign policy, growing rivalry and tensions, the Balkan problem and the responsibility for WW1.

The second module focuses on the causes and consequences of the Battle of Hastings. In particular students will study why England was invaded and how William set up a military occupation. We study the effects of the conquest including changing social status and the role of the church.

A2 Course Description

The course consists of two modules.

The first module focuses on the Angevin Kings, Henry II, Richard I and John. Students examine the nature of power and how the conflicting interests of the church and the state were resolved, including the murder of Thomas Becket. Furthermore we look at how the monarchs dealt with the growing power of the barons, how the crown attempted to centralise control and the barons resisted, culminating in the Magna Carta.

The second module is a coursework module of the War of the Roses 1377-1485. Students produce a 3,500 word essay on the topic covering causation, change and continuity, source evaluation and historiography. Key characters such as Henry VI, Edward IV, Richard III, Margaret of Anjou and Warwick the Kingmaker are investigated to analyse their impact. The controversial issue of English decline in the 15th Century is also considered.

AS Assessment Format

Two 1hr 30min written papers containing structured questions. Each 25%.

A2 Assessment Format

A 1hr 30min written paper containing structured questions.

Possible Careers and Higher Education

Degrees in History, The History of Ideas, History and Politics. Careers in civil service, teaching, law and local government or any career needing logical, progressive thought.

Further information from: Mr G Dicks and Mr P Weston

AS and A2 Levels

AS and A2 Level Applied ICT

Duration: 1–2 years **Board:** Edexcel

Course Entry Qualifications: GCSE Grade B or equivalent in ICT. If not taken: GCSE B in English and Mathematics.

AS Course Description

The AS units focus on developing your communication and decision making skills. You will learn about:

Unit 1: The Information Age

You will take a critical look at the impact that the internet has had on the way people conduct their personal and professional lives, explore the services it offers and gain 'hands-on' experience of using some of them.

Unit 2: The Digital Economy

In this unit, you will investigate how organisations are responding to the pressures of the e-marketplace by using transactional websites to:

- present their products and service
- gather information
- provide a personalised service

Unit 3: The Knowledge Worker

In this unit, you will develop your skills as a knowledge worker by learning how to use spreadsheet models to investigate alternatives and answer 'what-if' questions. The formulae in these models will allow you to try out some of the possible alternatives that you have identified. Together with information from other sources, you will use the outcome of the models to inform your decision making.

A2 Course Description

The A2 units build on the skills learnt to cover:

Unit 7: Using Database Software

In this unit you will develop your knowledge of, and skills in using databases further. You will learn the principles of data modelling and sound database design, and will use relational database software to build working database systems capable of storing large quantities of data and of handling both routine and one-off requests for information.

Unit 8: Managing ICT Projects

It is now widely recognised that specialist knowledge and skills are required to manage projects successfully. This unit will introduce you to some formal project management tools and methods and give you an opportunity to use specialist software to plan and monitor projects.

Unit 10: Using Multimedia Software

Your work for this unit will culminate in the design, development and testing of an interactive multimedia product for a specified target audience.

Module 6: Coursework Task – 20%

Students are requested to create a solution to an open-ended or cyclic task. This has to be for a real end-user and a real problem, identified by the student. The student is expected to fully identify the problem, design a solution and implement it, again producing suitable documentation for the end user. Typical tasks are more complex database problems, complex web development or problems requiring a range of different software packages sharing information. It is not permissible for a student to use a stand-alone programming language for this task.

AS Assessment Format

Coursework e-portfolio (x2) – 66.6%

Practical exam – 33.3%

A2 Assessment Format

Coursework e-portfolio (x2) – 66.6%

Practical exam – 33.3%

Possible Careers and Higher Education

Technology based university course. Any career involving a significant element of information technology.

Further information from: Mr J Burdett

AS and A2 Level Law

Duration: 1–2 years **Board:** AQA

Course Entry Qualifications: GCSE Grade B in English Language and preferably Maths / Humanities.

Course Description

This course is designed to give students a well rounded understanding of the English Legal System and some in-depth knowledge of selected areas of substantive law. This is a modular course that can be pursued for either one or two years.

AS

The course offers the opportunity to study the following modules:

Law Making & The Legal System:

- This involves the study of English law and how law is made
- How disputes are solved and the personnel involved in this process

Concept of Legal Liability:

- An introduction to the criminal law, the law of tort (Civil Disputes) and the applicable sanctions and remedies

A2

The course offers the following modules:

Criminal Law (offences against the person):

- This involves the study of both fatal & non fatal offences against the person along with applicable defences

Law of Tort & The Concepts of Law:

- A study of both fatal and non-fatal offences against the person along with the applicable defences: Negligence, Occupiers Liability, Nuisance and Vicarious Liability and the applicable defences
- A synoptic approach looking at the social concepts of the law based upon earlier learning in the course

Assessment Format

Assessment is by way of examination in the Summer Term and the end of year 1 and 2.

Both series of examinations will consist of two papers each based upon the modules studied in that year.

AS

Unit 1: 25% of the total A Level marks (1hr 30mins)

Unit 2: 25% of the total A Level marks (1hr 30mins)

A2

Unit 3: 25% of the total A Level marks (1hr 30mins)

Unit 4: 25% of the total A Level marks (1hr 30mins)

During the course students will develop the necessary skills to read law, and develop reasoned arguments. Students will gain the knowledge and skills to resolve disputes within the law.

Possible Careers and Higher Education

Careers in the legal profession, the City, government and local government, trade unions, police, banking and finance, degrees in law, criminology, politics, business. Law at A Level is viewed by universities as a fully academic subject producing high quality candidates.

Further information from: Mr P Jones

AS and A2 Level Mathematics

Duration: 1–2 years **Board:** AQA Specification A

Course Entry Qualifications: The course will suit a candidate who has followed the GCSE higher level course and has achieved a grade B. The course is not suited to a student who has followed the foundation tier at GCSE.

AS Course Description

Pure core 1: Algebraic methods, co-ordinate geometry, differentiation and integration. No calculator required.

Pure core 2: Sequences and series, trigonometry, exponentials and calculus.

Mechanics 1: Modelling, forces, Newton's laws and projectiles.

A2 Course Description

Pure core 3: Functions, logarithms and numerical methods.

Pure core 4: Co-ordinate geometry, vectors and formulation of trigonometry.

Statistics 1: Probability, binomial and normal distribution and estimation.

Assessment Format

Each module is assessed by a terminal examination.

On Pure Core 1, the paper is completed without the aid of a calculator. All other modules require use of a graphics calculator. There are no course assignments on any part of the course.

Possible Careers and Higher Education

Accounting, engineering, design, science and higher education.

Further information from: Mr T Raymond

AS and A2 Level Further Mathematics

Duration: 1–2 years **Board:** AQA

Course Entry Qualification: Grade A* or A in Higher Tier GCSE Mathematics. In order to do Further Mathematics you must also complete the A Level Mathematics course.

AS Course Description

Further Pure 1: Complex numbers, roots of equations, matrices and transformations.

Decision Mathematics 1: Algorithms, networks, paths, routes and linear programming.

Decision Mathematics 2: Critical path analysis, dynamic programming and game theory.

A2 Course Description

Further Pure 2: Proof by induction, hyperbolic functions, arc length, revolutions about the x axis.

Mechanics 2: Centres of mass, kinematics and circulation motion.

Statistics 2: Estimation, hypothesis testing and the Poisson distributions OR

Mechanics 3: Relative motion, dimensional analysis, collisions and projectiles on inclined planes.

Assessment Format

Each module is assessed by a terminal examination. There may be some choice of modules at A2.

A scientific calculator and graphics calculator will be required.

Possible Careers and Higher Education

Engineering, design, scientific and research.

Further information from: Mr T Raymond

AS and A2 Levels

AS and A2 Level Media Studies

Boards: WJEC

Course Entry Qualifications: Grade C in English Literature and English Language.

Course Description

WJEC Media Studies specification is designed to allow media students to draw on their existing experience of the media and to develop their abilities to respond critically to the media. It enables students to explore a wide variety of media, including digital media technologies, drawing on the fundamental concepts informing the study of the media: texts, industry and audiences.

The specification also encourages creative work to enable students to gain a greater appreciation of the media through their own production work and to develop their own production skills. At A2 in particular, students are given the opportunity to research a topic which will then form the basis for their production, thus encouraging them to create productions informed by an awareness of contemporary media issues.

AS

Unit 1: MS1 25% (50%) External Assessment: 2hr 30mins written paper

Media Representations and Responses:

Three compulsory questions, including one question on unseen audio-visual or print-based material (interactive media will be presented as print-based) (40, 30 & 30).

Paper raw mark total: 100. Paper UMS total: 100

Unit 2: MS2 25% (50%) Internal Assessment

Media Production Processes:

Three components: one pre-production (20); one production which develops from the pre-production (40); and one report on the production process (40).

(Group work permitted for audio-visual productions only.)

Paper raw mark total: 100. Paper UMS total: 100

A2

Same criteria as AS course PLUS a further two units.

Unit 3: MS3 25% Internal Assessment

Media Investigation & Production:

Three components: a written investigation into media text(s) based on one or more of the key media concepts – genre, narrative and/or representation (45); a media production (45); and an evaluation of how the production is informed by the investigative research (10).

(Group work permitted for audio-visual productions only.)

Paper raw mark total: 100. Paper UMS total: 100

Unit 4: MS4 25% External Assessment: 2hr 30mins Written Paper

Media – Text, Industry and Audience:

Three questions (30 marks per question).

Section A: one question from a choice of two.

Section B: two questions from a choice of four. Candidates must answer each question on a different media industry.

Paper raw mark total: 90. Paper UMS total: 100

Possible Careers and Higher Education

The qualifications provide a sound basis for a range of higher education courses, including Higher National Diplomas and degrees such as English, Journalism, Media production or careers in the Media: Radio, Television, Advertising, Film, Editing and Production. Media Studies has a strong relevance to those students who wish to pursue careers in marketing or business.

Further information from: Mr D Powell

AS and A2 Level Music

Duration: 1–2 years **Board:** Edexcel

Course Entry Qualifications: Grade B GCSE or Grade C plus instrumental skills above Grade 5.

Course Description

The course is designed to extend the music skills, knowledge and understanding needed to communicate and take part in music making. Students develop particular strengths and interests encouraging life-long learning and providing access to music related and other careers.

They develop analytical skills, knowledge of performance and the understanding of composition.

Students are engaged in the appreciation of the diverse and dynamic heritage of music.

AS Assessment Format

Unit 1: Performing – internally set and assessed – 15%

Unit 2: Composing – a three minute piece and CD sleeve note – 15%

Unit 3: Developing Musical understanding – identifying features aurally and analysing set works – 20%

A2 Assessment Format

Unit 4: Extended performance – 12 to 15min performance externally assessed – 15%

Unit 5: Composition and technical study – Two tasks either composition or technical study – 15%

Unit 6: Further musical understanding – Listening perception of unfamiliar music and the study of set works – 20%

Possible Careers and Higher Education

Degrees in music, musical studies, performance studies, music education, music technology. Careers in teaching, composing, performing, music management and business, recording engineering, music therapy, music events management, composing for the media, music copywriting, recording industry.

Further information from: Mrs M Hicks

AS Level Music Technology

Duration: 1 year with portfolio to be completed in two terms **Board:** Edexcel

Course Entry Qualifications: GCSE Music an advantage but not essential. Must be able to read music at least treble clef fluently. Musical ability is essential and keyboard skills are a definite advantage.

Course Description

This course is split into three areas of study:

- Principles and Practice of Music Technology including the use of MIDI and Audio Sequencing, Recording and Editing Sound
- Development of Popular Music since 1910
- Development of Technology based Music

There are three coursework elements to be completed over the first two terms and a final listening exam in the summer. The first element of the coursework portfolio is a sequenced realisation of a piece of popular music set by the exam board. Students are required to sequence the music and edit the performance to make it sound as close to the original as possible. The second element has more free choice involved; students are free to choose any song from Popular Music or Jazz Genre and create their own multi-track recording. The students take on the role of the recording engineer and record producer but are not allowed to perform on their own recording. The final piece is the most creative where students create their own entirely original interpretation of a set piece in one of two prescribed styles. It is a varied and exciting course where students expand their knowledge of many popular music styles but also study two styles in detail. Students will learn about the origins of the style and the social, political and cultural conditions affecting the development.

Assessment Format

Coursework Portfolio:

1a Sequenced Realised Performance – 25%

1b Multitrack Recording – 25%

1c Creative Sequenced Arrangement – 25%

Log book summarising the equipment used and the student's approaches to the work.

Listening Paper:

1hr 45 mins listening exam – 15%

Four shorter questions based on extracts of music.

Two longer questions on Special Focus Styles.

Possible Careers and Higher Education

Higher education at university or college. Careers in music recording, TV and film post-production.

Further information from: Miss N Frayne and Mrs M Hicks



AS and A2 Level Physical Education

Duration: 1-2 years **Board:** OCR

Course Entry Qualifications: Grade B or above in PE or equivalent science.

AS Course Description

60% theory, 40% practical.

Theory

Unit G451: An Introduction to Physical Education, is made up of three sections.

- Anatomy and Physiology (Section A)
- Acquiring Movement Skills (Section B)
- Socio-Cultural Studies relating to participation in physical activity (Section C)

Practical

Unit G452: Acquiring developing and evaluating practical skills in Physical Education, candidates will be assessed in:

- Performing two chosen activities from two different activity profiles OR
- Performing one chosen activity and coaching / leading one chosen activity from two different activity profiles OR
- Performing one chosen activity and officiating one chosen activity from two different profiles PLUS
- An oral evaluation and planning for the improvement of performance

A2 Course Description

70% theory, 30% practical.

Unit G453: Principles and concepts across different areas of Physical Education, is made up of two Sections. Section A consists of Socio-Cultural options. Section B consists of Scientific options.

"The university open day at Sandown Racecourse really made me realise that I do want to go to university and further my education."

James Atwell

Ex-Archbishop Tennisons
Music/Biology/Physics/Psychology/Geography

AS and A2 Levels

The three options we focus on are:

- Historical Studies (Option A1)
- Comparative Studies (Option A2)
- Exercise and Sport Physiology (Option B3)

Practical:

Unit G454: Acquiring, developing and evaluating practical skills in Physical Education, candidates will be assessed in:

- Performing one chosen activity from one of the activity profiles OR
- Coaching/Leading one chosen activity from one of the activity profiles OR
- Officiating one chosen activity from one of the activity profiles PLUS
- An oral evaluation, appreciation and improvement of performance

It is expected that all students who take Physical Education at A level, regularly participate competitively in two or more sports and represent a club outside of school and/or within school. With the large range of facilities at Warlingham and specialist coaches who are employed, there are many opportunities for students to develop their performance in sport. It is recommended that all A level PE students complete their School Service hours within the PE Department to help them prepare for the oral element of the practical unit. In addition to this, PE students should also be taking the CSLA qualification as their Enrichment Option.

AS Assessment Format

Unit G451: An Introduction to Physical Education is a 2hr written paper worth 90 marks (60% of the AS grade). This paper has three sections (Anatomy and Physiology, Acquiring Movement Skills and Socio-Cultural Studies relating to participation in physical activity). Candidates are required to answer all parts of the question in each of the sections to demonstrate knowledge, analysis and evaluation.

Unit G452: Acquiring, developing and evaluating practical skills in Physical Education, is internally assessed and externally moderated, worth 80 marks (40% of the AS grade). Candidates are assessed in two chosen activities from two different activity profiles and in response to a live performance.

A2 Assessment Format

Unit G453: Principles and concepts across different

areas of Physical Education is a 2hr 30min written paper worth 105 marks (70% of the A2 grade). This question paper has two sections. Candidates answer three questions, at least one of which must be from Section A.

Unit G454: Acquiring, developing and evaluating practical skills in Physical Education, is internally assessed and externally moderated, worth 60 marks (30% of the A2 grade). Candidates are assessed in one chosen activity and in response to a live performance.

The total A level weighting is 65% Theory and 35% Practical.

Possible Careers and Higher Education

Primary School Physical Education teacher, Secondary School Physical Education teacher, Sports Science degree, Sports Studies degree, Leisure Management qualification, physiotherapist, fitness manager, personal trainer, sports coaching.

Further information from: Miss J Cook



AS and A2 Level Physics

Duration: 2 years **Board:** AQA

Course Entry Qualifications: GCSE grade B or above in GCSE Physics or GCSE grade A/A* in GCSE Additional Science. GCSE grade B or above in GCSE Maths.

Course Description

The new physics course from AQA covers all aspects of modern physics. It considers the microscopic particles that make up everything we see around us and will help you explain how the macroscopic world around you works. It takes you inside the atom and out into space!

AS

- Particles, Quantum Phenomena and Electricity
- Mechanics, Materials and Waves
- Experimental Skills Assessment

A2

- Fields and Further Mechanics
- Nuclear and Thermal Physics
- Optional Unit (Astrophysics, Medical Physics or Turning Points in Physics)
- Experimental Skills Assessment

The course is designed to build on the topics you have covered at GCSE, developing your understanding of the world around you. Cutting edge physics research is trying to answer the big questions about the origins of the universe and the course will include a residential trip to a physics research centre such as CERN. Experimental work is vital in physics and the course assesses your experimental ability on a regular basis. If you intend to study physics it is very important you are a good mathematician, as AS/A2 physics relies on the ability to rearrange and apply mathematical equations to given situations.

"Warlingham has better sports facilities than other Sixth Forms. They are also one of the only places to offer Medieval History which is a subject that really interests me."

Gisela Quevedo

Ex-Warlingham
English/French/Business Studies/History/Maths/
Critical Thinking

Assessment Format

Externally Assessed Module Tests – 80%

Internally Assessed Experimental Skills Assessment – 20%

Possible Careers and Higher Education

Physics is one of the most respected AS/A2 subjects, because of the demands it puts on students and the skills it equips them with. The study of Physics opens the door to degrees in Physics, Medicine, Astronomy, Engineering and Electronics. Graduates in any of these disciplines are highly sought after and careers include research physicists, engineers and accountants. A study of Physics gives you options, skills and the ability to explain the world around you.

Further information from: Mr R Watkins

AS and A2 Level Psychology

Duration: 1–2 years **Exam Board:** AQA

Course Entry Qualifications: Minimum requirement of Grade B or above in English and Grade C in Mathematics.

AS Course Description

Unit 1

- Cognitive Psychology: Memory
- Developmental Psychology: Early Social Development
- Research Methods

Unit 2

- Physiological Psychology: Stress
- Individual Differences: Psychopathology
- Social Psychology: Social Influence

A2 Course Description

Unit 3

- Topics in Psychology: Biological Rhythms & Sleep, Relationships, Eating Behaviour

Unit 4

- Psychopathology: e.g. Schizophrenia
- Psychology in Action: e.g. Psychology of Addictive Behaviour

Psychological Research & Scientific Method:

Human behaviour and the mind continue to fascinate and intrigue. Much of the course will be addressing the following questions:

- In what ways do our parents and others have an continuing impact on our lives?
- What are the factors affecting eyewitness testimony and do they make our memories inaccurate?
- Are we normal? Abnormal? Who really knows?
- What is the relationship between stress and physical illness?
- Why do some people develop addictions such as smoking or gambling?
- How do we construct practical research activities, in order to test theories and psychological concepts?

If you feel excited by the challenge of tackling these and other issues right at the cutting edge of this new science, then Psychology is the course for you!

AS Assessment Format

Two modular examinations – 1hr 30mins in duration – each worth 50% the total AS marks and 25% of the total A2 marks.

A2 Assessment Format

Two modular examinations – 1hr 30mins in duration – each worth 25% of the total A2 marks.

Possible Careers and Higher Education

Students can go on to study a variety of courses at university and enter a range of careers such as – degrees in Psychology, Criminology, other Social Sciences, Business Studies, Human Biology, Advertising & Marketing, Law, Sports Science, Forensic Science. Careers in Clinical Psychology, Occupational Psychology, Teaching, Health Service, Social Work, Business, Media, Human Resources, Physiotherapy.

Further information from: Mrs Sayers

AS and A2 Levels

AS and A2 Level Sociology

Duration: 1–2 years **Board:** AQA

Course Entry Qualifications: Minimum requirement of Grade B in English Language.

Course Description

The AS/A2 levels are based on developing students' knowledge and understanding of sociological thought, methods of sociological enquiry and two major themes which will run throughout the course.

These are:

- Socialisation, culture and identity
- Social differentiation, power and stratification.

The course is divided into units.

AS

- Families and Households
- Education
- Sociological Methods

A2

- Beliefs in Society
- Crime and Deviance
- Theory and Methods

AS Assessment Format

Unit 1: SCLY1. Families and Households:

Written Paper (1hr) – 40% of AS; 20% of A Level

Candidates will answer one question which consists of five parts.

Unit 2: Education. Sociological Methods:

Written Paper (2hrs) – 60% of total AS marks, 30% of total A Level marks.

- Candidates will have one question on Education. This consists of four parts.
- One question on Sociological Research Methods in the context of the chosen topic. This question consists of one part. In addition, candidates answer one question on Freestanding Research Methods. This question consists of four parts.

A2 Assessment Format

Unit 3: Beliefs in Society:

Written exam (1hr 30mins) – 20% of total A Level marks

Candidates will answer one question on beliefs in society and one compulsory question and one question from a choice of two.

Unit 4: Crime and Deviance, Theory and Methods: 30% of total A Level marks.

- Candidates have one question on Crime and Deviance. This consists of two parts.
- One question on sociological research methods in the context of the chosen topic. This question consists of two parts. In addition, candidates answer one question on theory and methods.

Possible Careers and Higher Education

Students can go on to studying a variety of courses at university and enter a range of careers such as Law, Medicine, Social Work, Teaching and the Media.

Further information from: Ms P Shah



Spanish A Level

Duration: 2 years **Board:** AQA

Course Entry Qualifications: GCSE grade B or above in Spanish

Course Description

During this course you will read and listen to authentic foreign language materials and will study aspects of the contemporary society, cultural background and heritage of a country where the language is spoken. You will have the opportunities to develop your understanding and awareness of spiritual, moral, ethical, environmental, health and European issues. You will extend and develop your knowledge of the grammar and vocabulary of the foreign language and will use this to speak, write, read and listen to the language.

In addition, you will learn how to:

- be an effective communicator
- speak and write the language in a range of different situations and for different purposes
- use the language to express facts and ideas
- use the language to present explanations, opinions and information

“In the future, I would like to go to university and study Marine Biology. Enrichment subjects such as the Duke of Edinburgh Award and the Extended Project Qualification (EPQ) will allow me to stand out from other university candidates.”

Aimee Coggins

Ex-Warlingham

Biology/Chemistry/Government & Politics/
Psychology

The students study the following topics:

AS

Media: television, advertising, communication technology

Popular culture: cinema, music, fashion trends

Healthy living/lifestyle: sport/exercise, health and well-being: alcohol, diet, holidays, etc.

Family/Relationships: parents, friendships, marriage/partnerships

A2

Environment: pollution, energy, protecting the planet

Multi-cultural society: immigration, integration, racism

Contemporary social issues: wealth and poverty, law and order, impact of scientific and technological progress

Students will also choose a cultural topic, from the target language country, to study in depth:

- A region
- A period of 20th century history
- A novel
- A dramatist or poet
- The work of a director/architect/musician/painter.

AS Assessment Format

Unit 1: Listening/reading/writing (2hrs) – 35%

Unit 2: Oral (15mins) – 15%
Discussion on three chosen topics

A2 Assessment Format

Unit 3: Listening / reading / writing (2hrs 30mins) – 35%

Unit 4: Oral (15mins) – 15%
Presentation of a point of view and a conversation on two chosen cultural topics

Possible Careers and Higher Education

Degrees in Spanish, Business Studies with Spanish, European Studies, Sciences with Spanish, Law with Spanish. Careers in translating, travel industry, interpreting, au pair work, bi-lingual secretarial work. Languages are viewed as a desirable qualification by many employers, showing good communication skills.

Further information from: Miss T Rhoda

Applied GCE

Applied AS and A2 Level (Single & Double Award) Business

Duration: 1–2 years **Board:** Edexcel

Course Entry Qualifications: Five GCSEs at C or above or BTEC First Diploma in Business at Merit

Course Description

This course provides a broad study of business with the opportunity to specialise in such areas as Marketing, Finance or Management.

The course develops a practical focus allowing students to gain skills which can be used in work-based training schemes or at university.

Aims

- To stimulate and sustain students' interest in and enjoyment of business.
- To foster imaginative and critical thinking as well as the acquisition of knowledge.
- To develop an understanding of the world of business and recognition of its value to the local, national and global economy.

Assessment Format

The award will be assessed by a mixture of coursework and external examinations.

The examinations are 90mins in length and are a mixture of short-answer questions and extended writing. Coursework is based around investigations into real businesses. You will get the opportunity to take part in organised visits to local businesses and will receive talks on a range of business topics from visiting speakers.

Possible Careers and Higher Education

Applied Business is ideal preparation for degree level study in a wide range of courses at university or to gaining employment in business-related careers such as Marketing, Finance, Administration, Customer Service, IT, Human Resources or Sales.

Further information from: Mr S Grimes

Applied GCE (Single & Double Award) Health & Social Care

Duration: 2 years **Board:** Edexcel

Course Entry Qualifications: 5 GCSEs at C or above

Course Description

The course consists of six compulsory units and six optional units. It provides a wide education that will provide the student with a background to the Health and Social Care industry. This will allow the student to seek employment or progress to college or university.

The Applied GCE Health and Social Care Double Award comprises of:

Compulsory Units

- Equal opportunities and clients rights
- Communicating in Health and Social Care
- Physical aspects of health
- Factors affecting human growth and development
- Health and Social Care and early years service
- Research perspectives in Health and Social Care

Optional Units

These will be selected by the tutors and could include:

Child development, social policy, sociological aspects of health and illness, cell structure, genetics and reproduction for health care, childcare practice and influences on health and disease.

Assessment Format

The award will be assessed by a mixture of coursework type units of work and tests set by the examining body. These tests can be taken more than once. Work experience will be a very important part of the course and it will be arranged in a block or blocks within the course.

Further information from: Mrs A Riddell

BTEC National Diploma

BTEC Level 3 Advanced Subsidiary Diploma in Business (Retail Pathway)

Duration: 2 years **Board:** Edexcel

Credits: 60

Course Entry Requirements: Five GCSEs at C or above (preferably including Business) or BTEC First Diploma

Course Description

As the BTEC Retail course no longer exists, but was popular and successful at Warlingham School, the Business Studies Department are introducing the BTEC Level 3 Advanced Subsidiary Diploma in Business with a retail slant, known as the Retail Pathway.

This new and exciting course provides a specialist work-related programme of study that covers the key knowledge and practical skills required in business. As the course has a Retail slant to it, it is particularly, but not exclusively suitable for students interested in gaining employment in the retail sector or undertaking further study of Retail Management at university.

Students study four core Business units and two specialist Retail units. The four core units are delivered with a focus on the Retail Sector, using Retail Sector businesses as case studies. Students will also take part in visits to and have speakers from leading retail outlets.

Core Units

- 1 The Business Environment
- 2 Business Resources
- 3 Introduction to Marketing
- 4 Business Communication

Retail Pathway Units (two from)

- 1 Understanding Retailing
- 2 Visual Merchandising in Retail
- 3 Fashion Retailing
- 4 Food Retailing

Assessment Format

The Diploma will be assessed through the completion of coursework. There are no examinations.

Possible Careers and Higher Education

The BTEC Level 3 Advanced Subsidiary Diploma in Business (Retail Pathway) is ideal preparation for degree level study in a wide range of courses at university or for gaining employment in business-related careers such as Marketing, Finance, Administration, Retail Management, ICT, Human Resources and Sales.

Further information from: Mr S Grimes or Mr M Hurley

BTEC National Sport

Duration: 2 years **Board:** Edexcel

Course Entry Qualifications: A minimum of five A*-C grades and a C grade in GCSE in PE or BTEC Sport Level 2 qualification at Merit grade.

Course Description

The BTEC Nationals in Sport provide an introduction to the sector for learners looking to build a career in sport, within one of its occupational areas. These areas include careers in exercise and fitness, coaching and leadership, sports development and the outdoors. At the BTEC Diploma and Extended Diploma level, there are three specific specialist pathways to choose from: Development, Coaching and Fitness.

The specification has been structured to allow learners maximum flexibility in selecting optional units, so that particular interests and career aspirations within the sport and active leisure sector can be reflected in the choice of unit combinations.

Assessment Format

Edexcel BTEC Level 3 Diploma in Sport (Development, Coaching and Fitness)

- Qualification credit value: a minimum of 120 credits
- Minimum credit to be achieved at, or above, the level of the qualification: 90 credits
- Mandatory unit credit: 70 credits
- Optional unit credit: 50 credits
- A maximum of 10 optional credits can come from other QCF BTEC units to meet local needs

Units

There are a large number of units that can be studied. Most of the units below will be studied during the two years of the course.

- 1 Principles of Anatomy and Physiology in Sport
- 2 The Physiology of Fitness
- 3 Assessing Risk in Sport
- 4 Fitness Training and Programming
- 5 Sports Coaching
- 6 Sports Development
- 7 Fitness Testing for Sport and Exercise
- 8 Practical Team Sports
- 9 Practical Individual Sports
- 10 Exercise, Health and Lifestyle

- 11 Rules, Regulations and Officiating in Sport
- 12 Leadership in Sport
- 13 Sports Injuries

Possible Careers and Higher Education

Careers in sport, within one of its occupational areas, exercise and fitness, coaching and leadership, sports development and the outdoors.

Further information from: Mr S Day



BTEC First Diploma

BTEC First Diploma Business

Duration: 1 year **Board:** Edexcel

Course entry requirements: A range of GCSEs and an interview.

Course Description

This course provides a broad education that will enable students to investigate a range of businesses. The course will also give the students an opportunity to develop the highly-valued enterprise skills, preparing them for future employment.

Success on this course can be a gateway to study a BTEC level 3 course and/or other advanced level courses.

Compulsory Units

- 1 Business Purposes
- 2 Business Organisations
- 3 Financial Forecasting for Business
- 4 People in Organisations

Optional Units (two from)

- 1 Starting a Small Business
- 2 Business Online
- 3 Consumer Rights
- 4 The Marketing Plan
- 5 Promoting and Branding in Retail Business
- 6 Visual Merchandising and Display Techniques for Retail Business

Assessment Format

The BTEC First course is 100% coursework, with no external examinations.

Further information: Mr S. Grimes

“Warlingham has given me a wide range of opportunities providing me with the best possible chance of gaining grades I need whilst helping me to develop as a person through schemes such as the Surrey Sixth Form Graduation Certificate.”

James Whitehead

Ex-Warlingham
Design & Technology /
Maths / Geography / Physics /
Critical Thinking

BTEC First Diploma Sport

Duration: 1 year **Board:** Edexcel

Course Entry Qualifications: A range of GCSEs and an interview.

Course Description

This course provides a wide education that will provide the student with a background to the sports industry, sport, coaching and fitness. This will allow the students to seek employment in the sports industry or progress to BTEC level 3.

Units

BTEC First Diploma in Sport comprises six units.

Mandatory Units

- Practical Sport
- Fitness Testing and Training

Optional Units

A choice will be made from a number of options such as:

- Anatomy and Physiology for Sport
- Injury in Sport
- Planning and Leading Sports Activities
- Planning and Running a Sports Event

Planning and Leading Sports Activities

This unit provides learners with the knowledge and skills to be able to plan and lead a range of practical sports activities. The unit also looks at the qualities necessary for effective sports leadership. Learners will identify the qualities required by studying real examples of successful leaders, possibly those they have worked with or observed in the community.

Health, safety and injury

Investigating the main causes and prevention of sports injury. How they are treated and risk assessment.

GCSE

GCSE English Language

Duration: 1 year **Board:** WJEC

Course Entry Qualifications: GCSE English grade D

Course Description

The course aims to extend students through a study of different materials from those encountered in Year 11. Through discussion and analysis of some literary texts and non-fiction materials, the students will be encouraged to develop a more mature style of writing as well as improving their skills and techniques. Units of work will be continuously assessed and will cover a range of tasks for different purposes and audiences.

Assessment Format

Coursework – 40% (20% written, 20% oral)

Final examination – 60%

Possible Careers and Further Education

Leading to employment, A Level and BTEC courses.

Further information from: Mrs R Holder

GCSE Mathematics

Duration: 1 year **Board:** Edexcel

Course Entry Qualifications: GCSE Mathematics Grade below a C.

Course Description

This course is for those students who wish to attain a C grade or higher in GCSE Mathematics. This one year course aims to extend the knowledge of the students and will cover the GCSE syllabus at C grade and below.

The course includes the study of:

- Number
- Algebra
- Shape, Space and Measures
- Handling data

Assessment Format

100% examination. This is a new syllabus and means that students will not carry the coursework completed in Year 11 through.

Possible Careers and Further Education

Leading to employment, A Level courses and BTEC courses.

Further information from: Mr T Raymond



“The Surrey Graduation Scheme and the Extended Project will really help me stand out at university and the extra-curricular activities such as trips and university visits have really made a difference to my learning experience.”

Ryan Burke

Ex-Warlingham

Business Studies/Physics/Maths/
Geography/Critical Thinking

Enrichment

Enrichment Options 2010/11

A new and exciting development which we have added to our Year 12 curriculum for September 2010. All Year 12 students will opt for one timetabled two hour enrichment activity from the following:

Duke of Edinburgh Award

Nationally recognised qualification.

Young Enterprise

Nationally recognised qualification.

Cooking for College

This could also include food safety and hygiene qualifications.

ICT

A GCSE equivalent award could be achieved with additional hours.

Community Sports Leadership Award

The highly regarded nationally recognised qualification.

Core Sport

May include team games, swimming, trampolining, fitness and possibly fixtures against other school/colleges.

Extended Project Qualification

The new highly sought after AS equivalent qualification. Especially suitable for potential Oxbridge Candidates, medics, scientists, historians, and lawyers.

Critical Thinking AS

This will enable you to understand and analyse what other people say and write, decide whether other people's reasoning is strong or weak, assert your own point of view and argue convincingly. This will help you in your other studies and in life to make rational decisions, give reasons for your own beliefs and actions and write logical structured essays.

Digital Photography

Using the camera and understanding the camera controls, creative use of lighting and composition, composition and framing, history of art & photographic movements, basic image manipulation.

Students enrolling onto a one year BTEC First qualification would benefit from choosing the CSLA (BTEC First Sport students) and Young Enterprise (BTEC First Business students).

AS Level Critical Thinking

Duration: 1 year **Board:** OCR

Course Description

Critical Thinking can be defined as a form of reflective reasoning which analyses and evaluates information and arguments by applying a range of intellectual skills in order to reach clear, logical and coherent judgements within a given context.

The AS GCE specification gives an introduction to the concepts, principles and techniques which underlie Critical Thinking and expands their application to a range of contexts. It provides a discrete package of material providing students with knowledge and understanding of Critical Thinking applicable to the study of a range of academic and vocational subjects.

The course gives students the opportunity to:

- understand the importance of examining knowledge and beliefs carefully
- recognise, analyse and evaluate their own and others beliefs and knowledge claims in a variety of contexts
- recognise and evaluate assumptions
- evaluate reasoning of different kinds
- make connections and synthesise information and arguments
- generate their own arguments and express them clearly
- enhance students' achievement in other subjects

Assessment Format

Unit 1: Credibility of Evidence – written exam (1hr 15mins). It has structured questions based on one or more stimulus passages.

Unit 2: Assessing and Developing Argument – written exam (1hr 15 mins). It has 15 multiple choice questions and structured questions based on one or more stimulus passages.

Possible Careers and Further Education

Students will find Critical Thinking skills of great benefit in preparation for a wide range of careers, including the fields of law, academic research (e.g. in the disciplines of science, arts or humanities), social science, journalism, medicine, business, accounting and engineering.

Further information from: Ms P Shah

Extended Project Qualification (EPQ)

The extended project qualification is a unique qualification that is different to anything that a student is likely to have experienced to date in their studies. It is a genuinely ground-breaking, flexible and transformational course for students.

There are five key principles that make the EPQ so special – students have free choice when choosing a pathway of study – this will be agreed in conjunction with the Head of the Sixth Form and as well as, a supervisor that will monitor and mentor students throughout their project. The project requires autonomous work in planning, delivering and presenting the research conducted. There will be some teaching of the necessary skills needed in order to complete the project but the majority of the learning will require self-motivation and strong organisational skills. The project also emphasises skills that will prepare students for a life beyond the school gates. Finally, the EPQ will be enjoyable and fulfilling and the benefits to students are potentially unlimited – these range from the development and enhancement of project management and critical thinking skills to helping employers and admission tutors distinguish applicants from others during the interview process.

The EPQ requires students to choose a topic or area of interest that has a link to their programme of study or future aspirations relating to future employment and/or a higher educational course. Students will plan, research, conduct their projects and meet with their allocated supervisor on a regular basis. They will also provide evidence of all stages of the project process by documenting this in a production log. Finally, students are required to produce a written report of between 1000-5000 words and present their project to a specified audience. This qualification is graded on an A* to E scale with the emphasis on the process of planning, research and conduction of the project.

This is a new and exciting qualification which provides students with a taste of what autonomous working is like at university and in the workplace and as a result helps bridge the gap and in turn raises ambition.



Warlingham School Sixth Form

A Business & Enterprise Specialist School

Tithe Pit Shaw Lane
Warlingham
Surrey
CR6 9YB

T: 01883 624067
F: 01883 624026
info@warlingham.surrey.sch.uk
www.warlinghamschool.co.uk



Business &
Enterprise